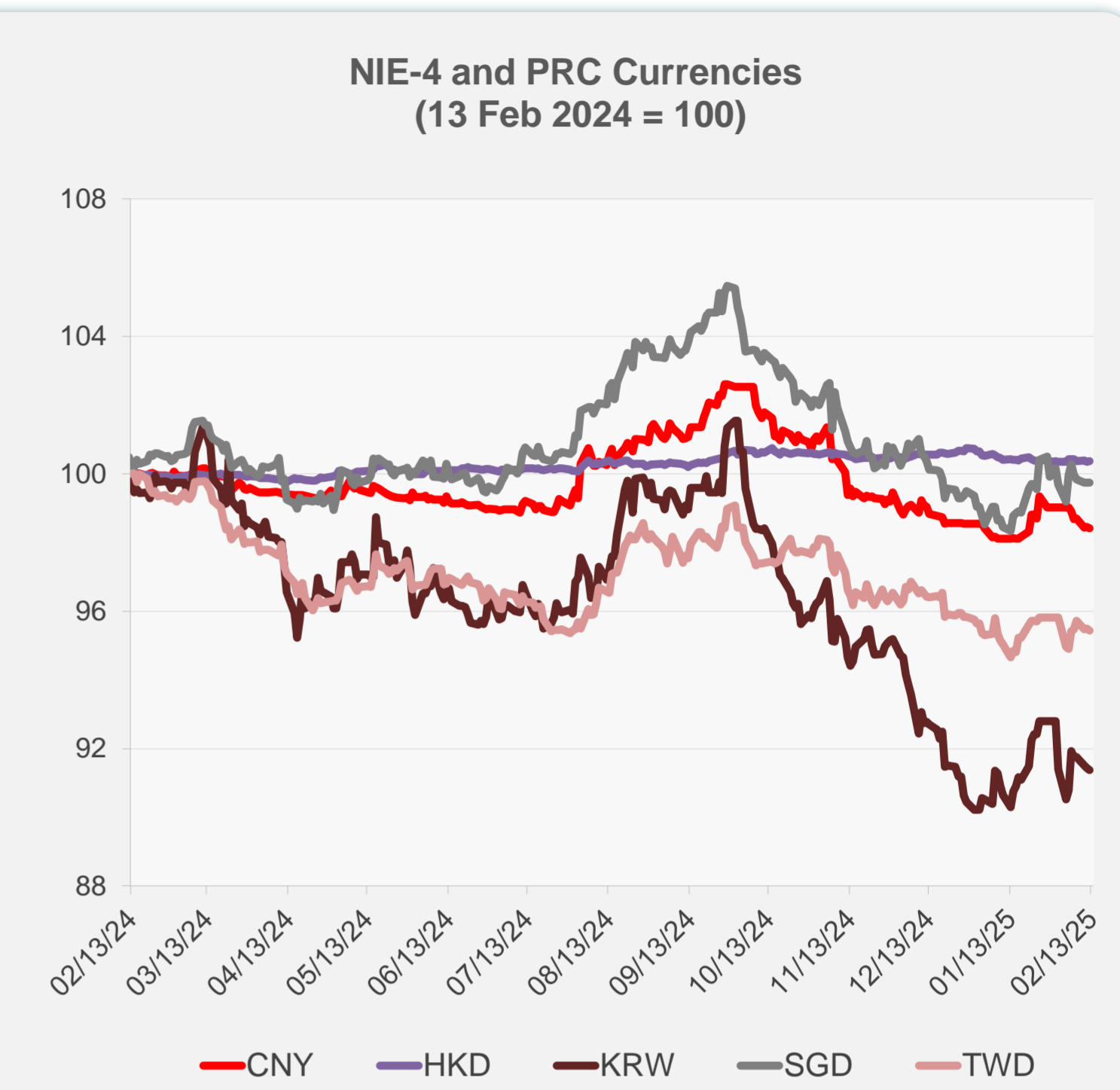
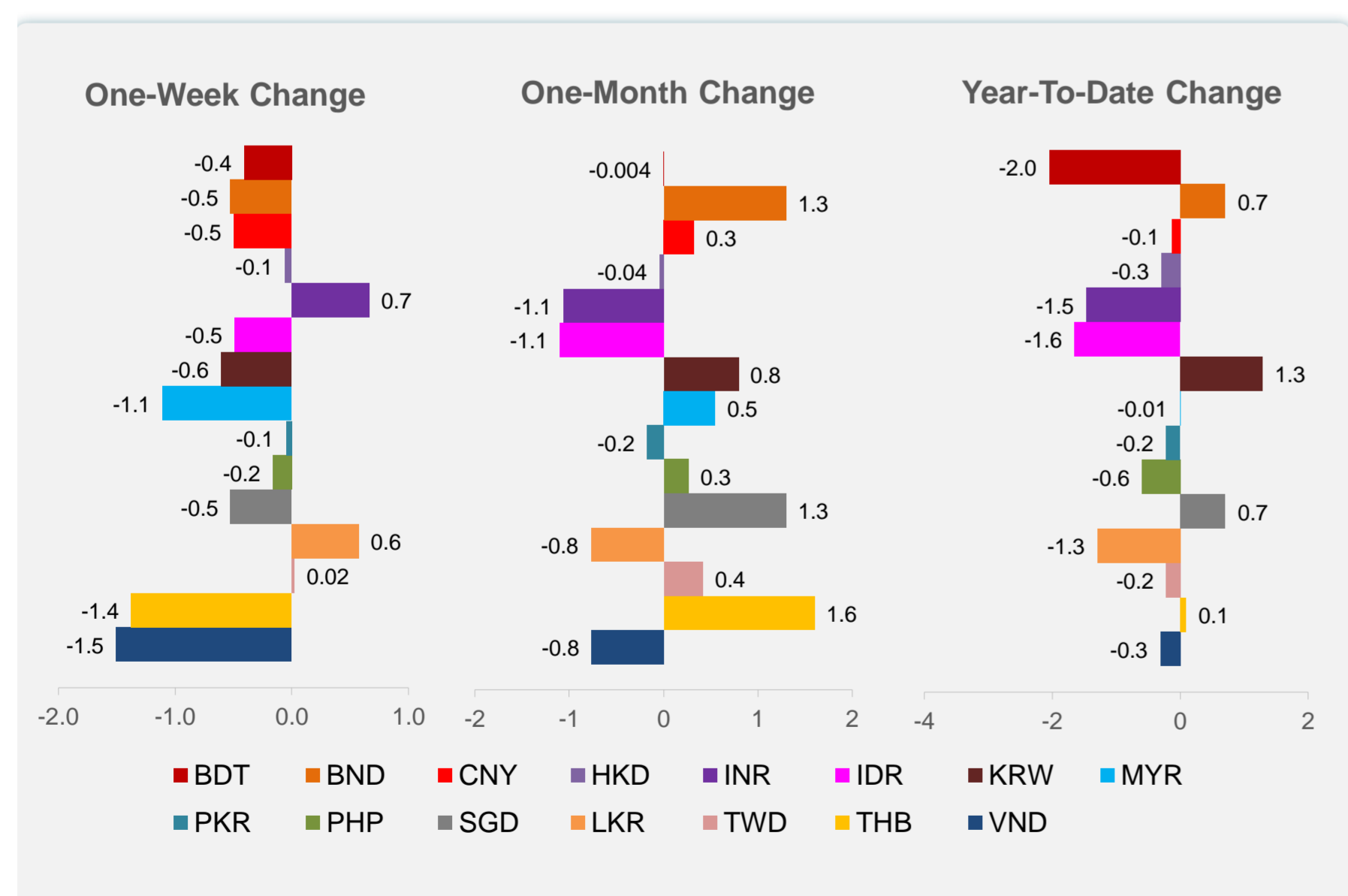
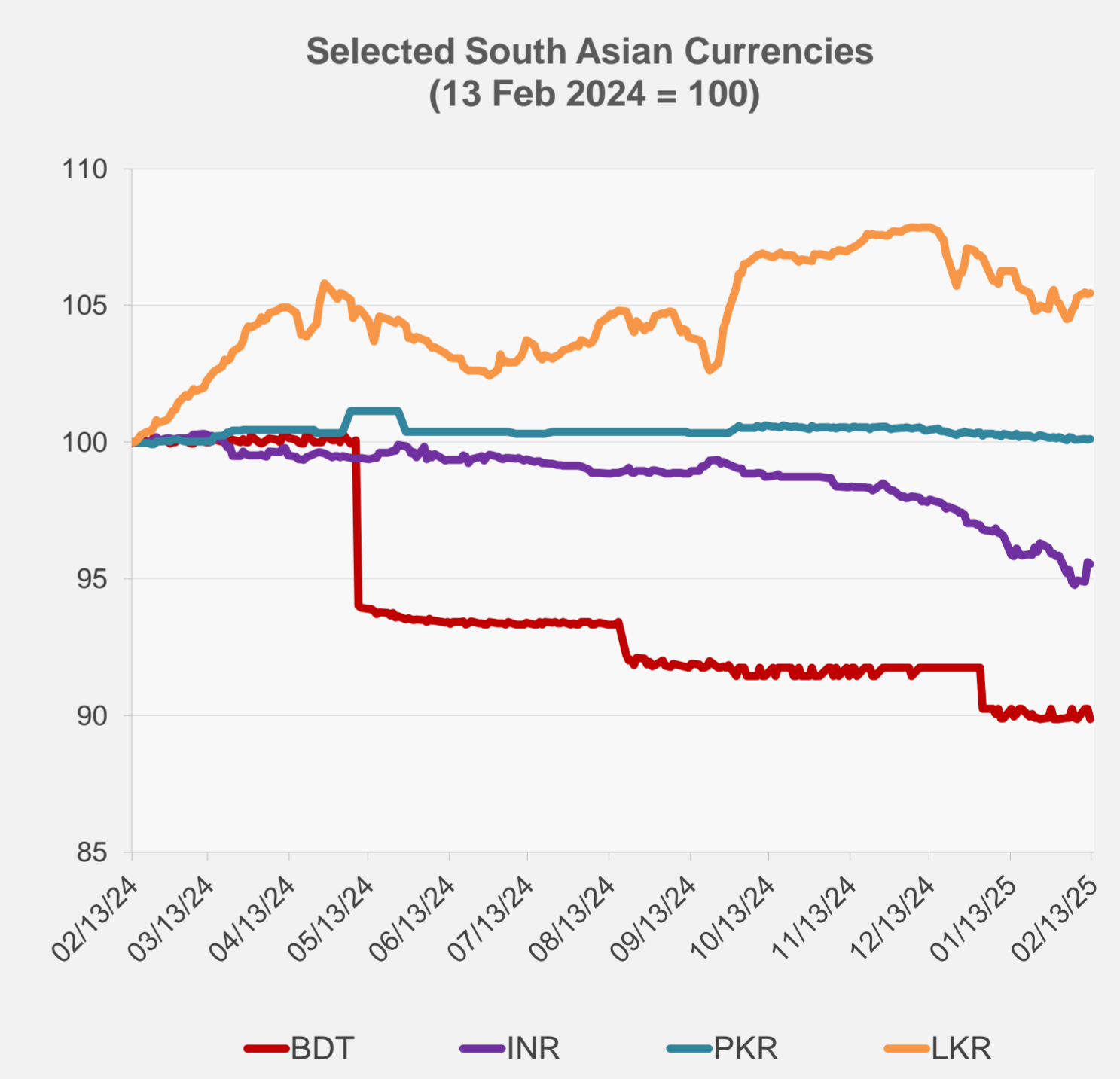
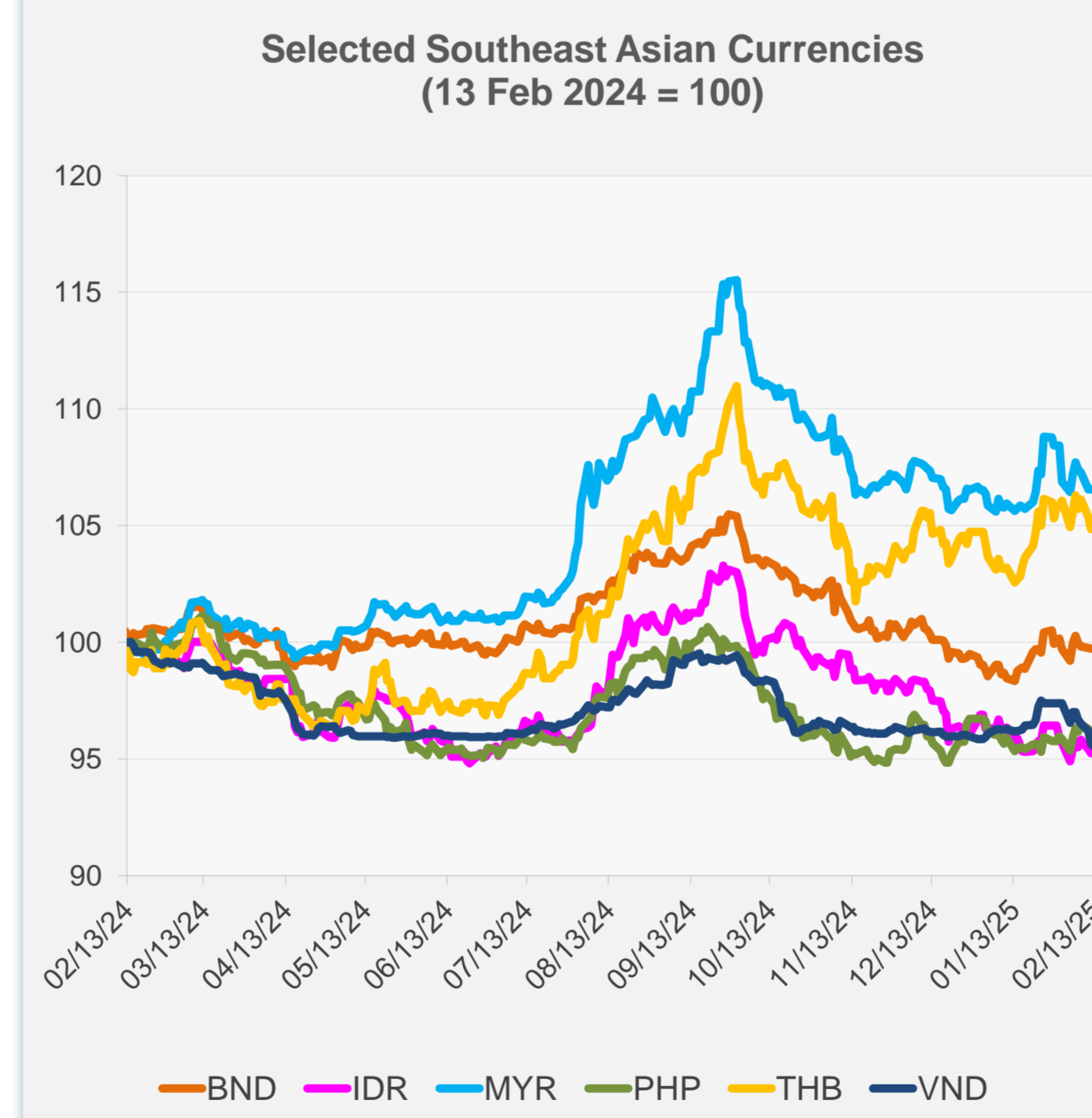


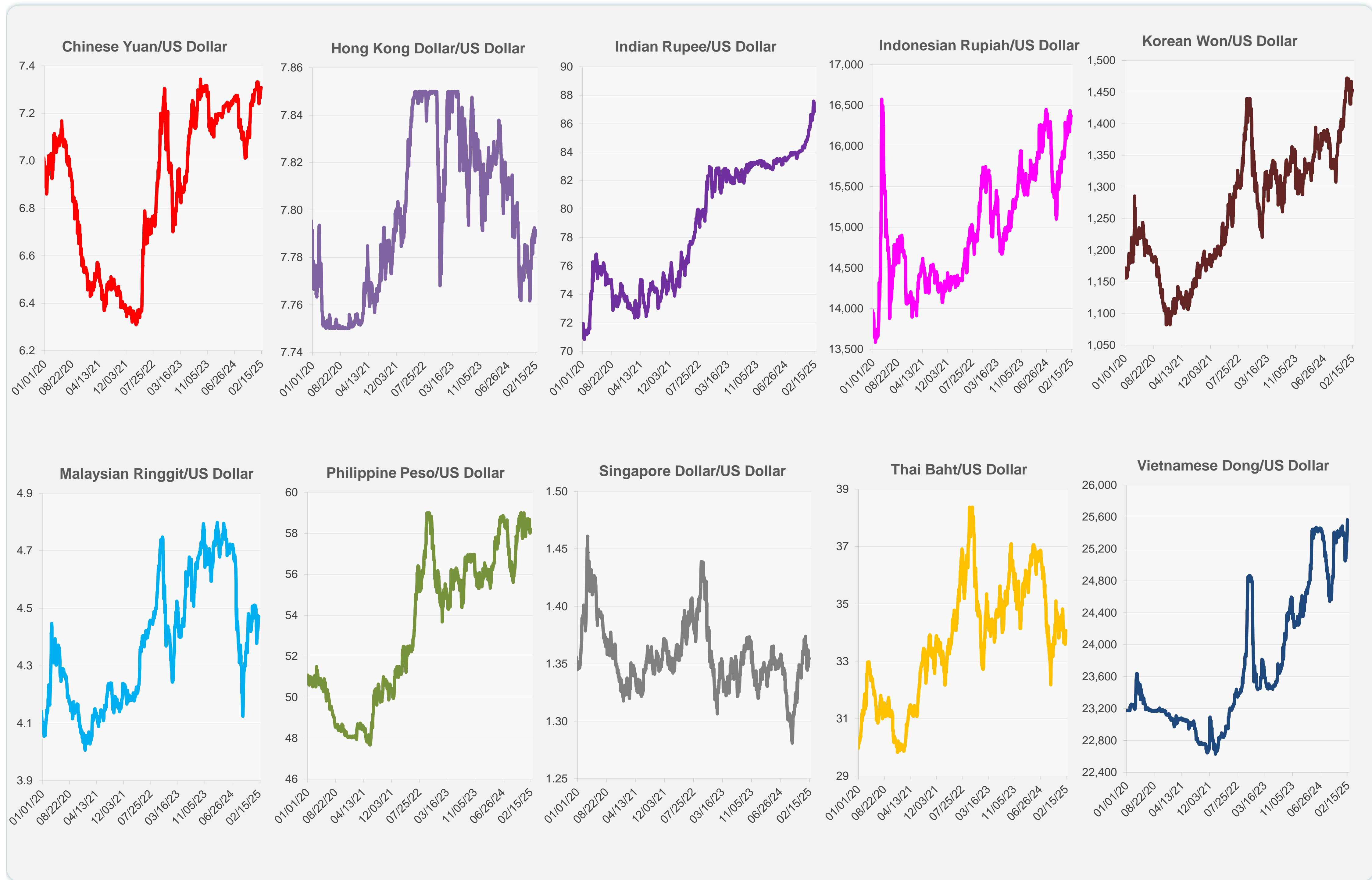
	Latest Closing	% change from Previous Day	% change from 01-Jan-25
Euro	0.96	0.31	0.18
Japanese yen (JPY)	154.45	-1.25	1.76
Bangladeshi taka (BDT)	122.00	-0.41	-2.05
Brunei dollar (BND)	1.35	0.00	0.71
Chinese yuan (CNY)	7.31	-0.04	-0.13
Hong Kong dollar (HKD)	7.79	0.01	-0.29
Indian rupee (INR)	86.89	-0.06	-1.47
Indonesian rupiah (IDR)	16,365.00	0.06	-1.65
Korean won (KRW)	1,453.40	-0.07	1.29
Malaysian ringgit (MYR)	4.47	-0.04	-0.01
Pakistan rupee (PKR)	278.99	0.04	-0.22
Philippine peso (PHP)	58.19	0.01	-0.59
Singapore dollar (SGD)	1.35	0.00	0.71
Sri Lanka rupee (LKR)	296.84	0.04	-1.30
Taipei,China NT dollar (TWD)	32.86	-0.05	-0.22
Thai baht (THB)	34.06	0.00	0.10
Vietnamese dong (VND)	25,565.00	-0.10	-0.31



NIE = Newly Industrialized Economies



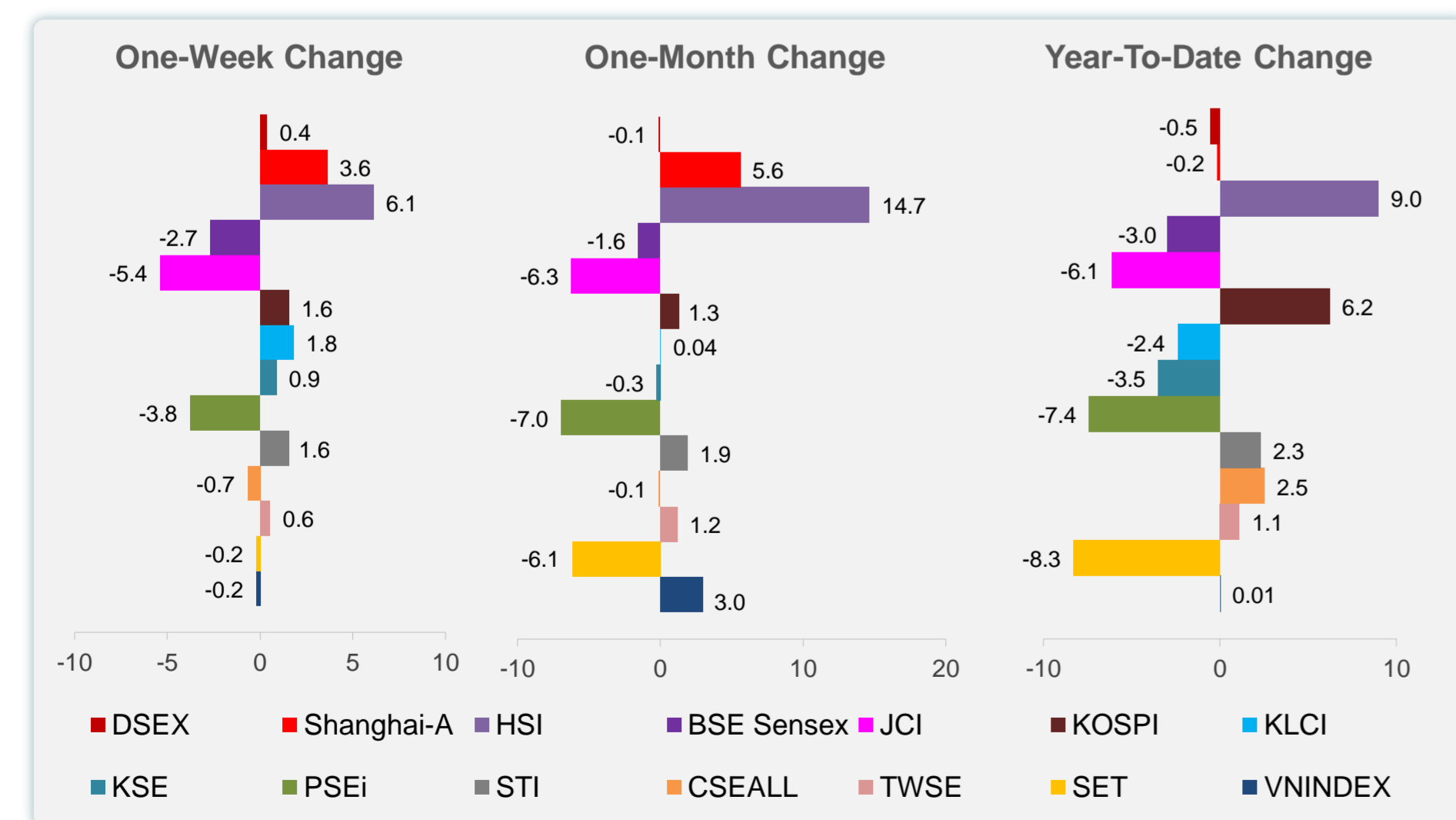
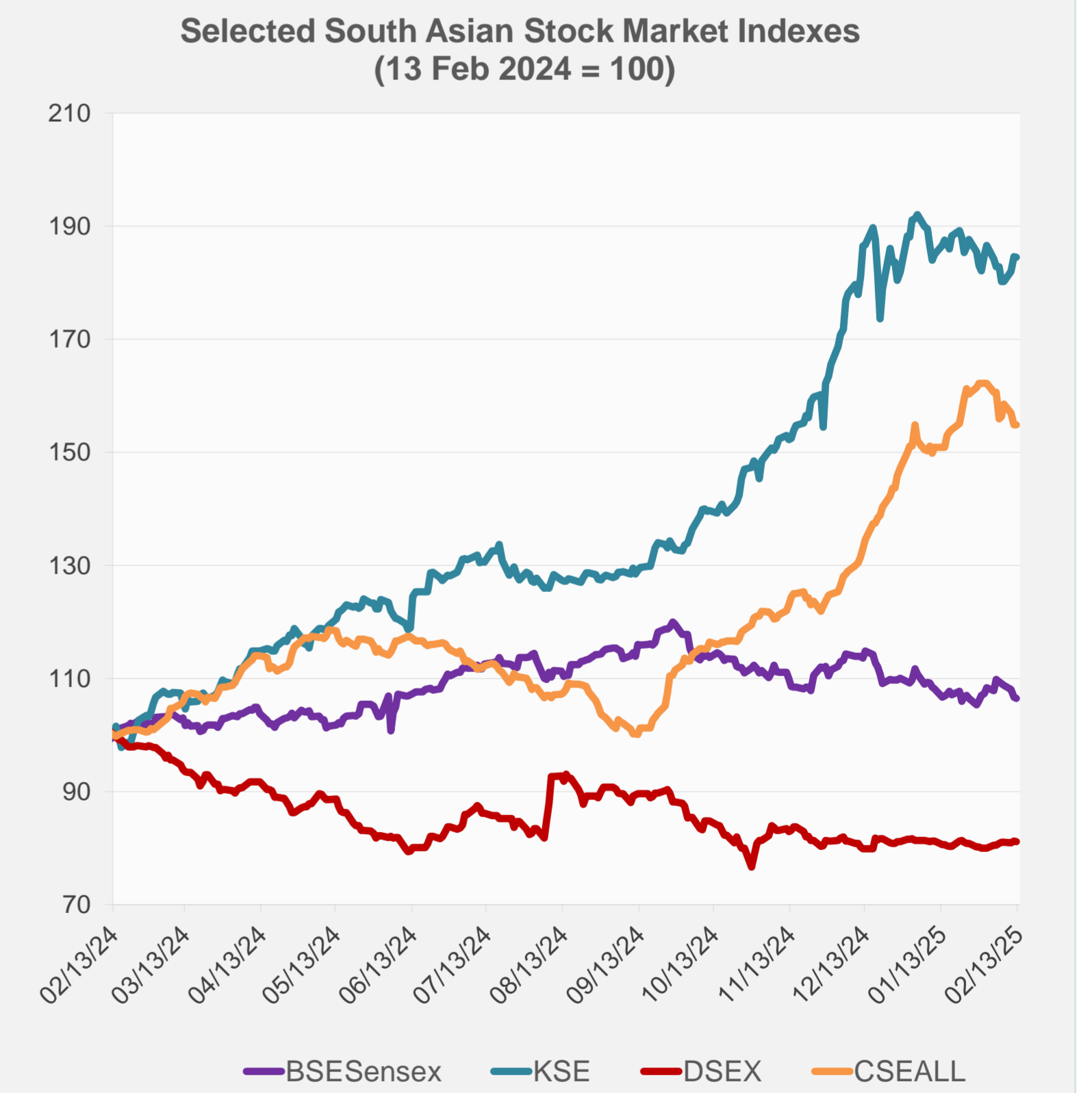
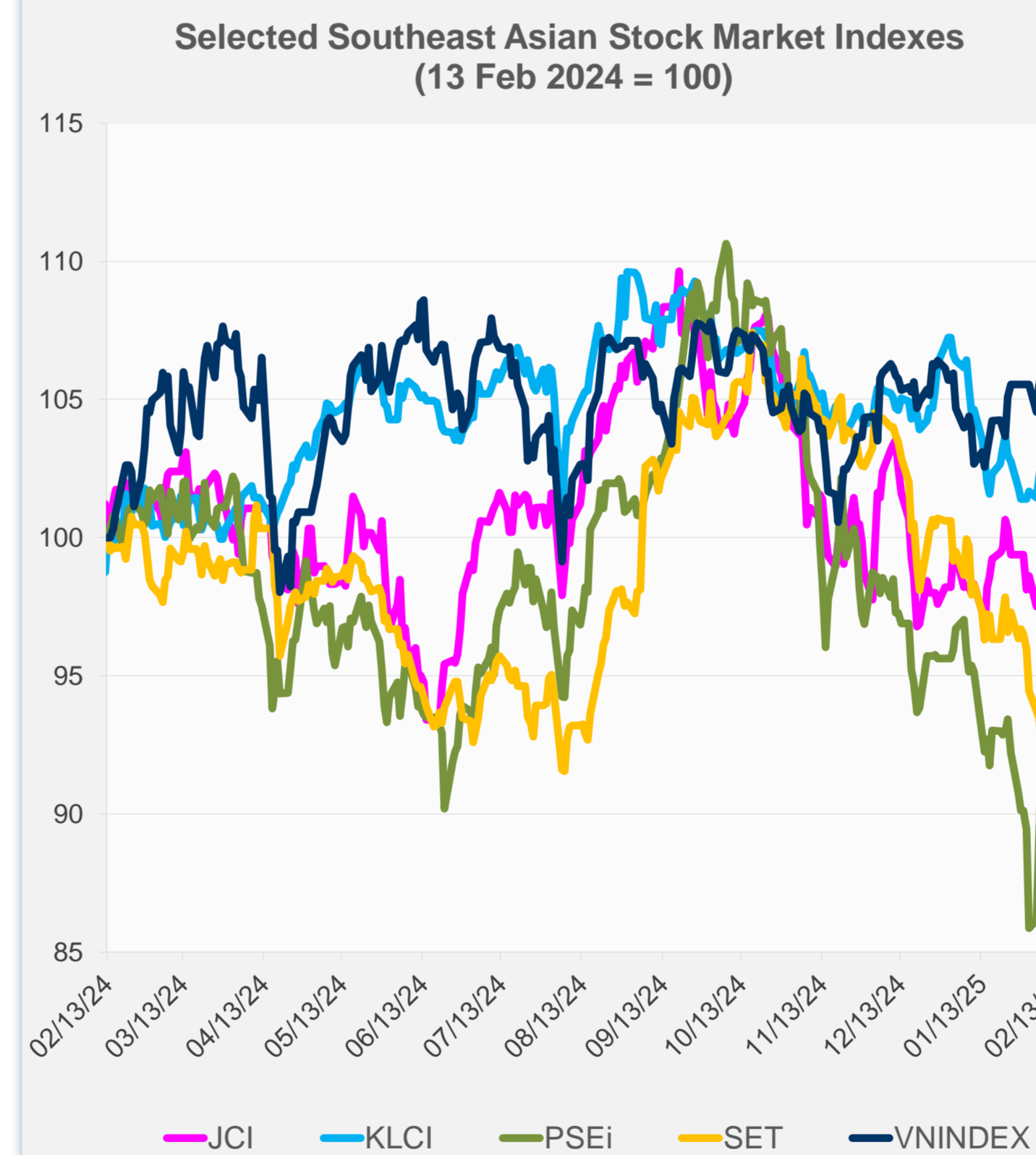
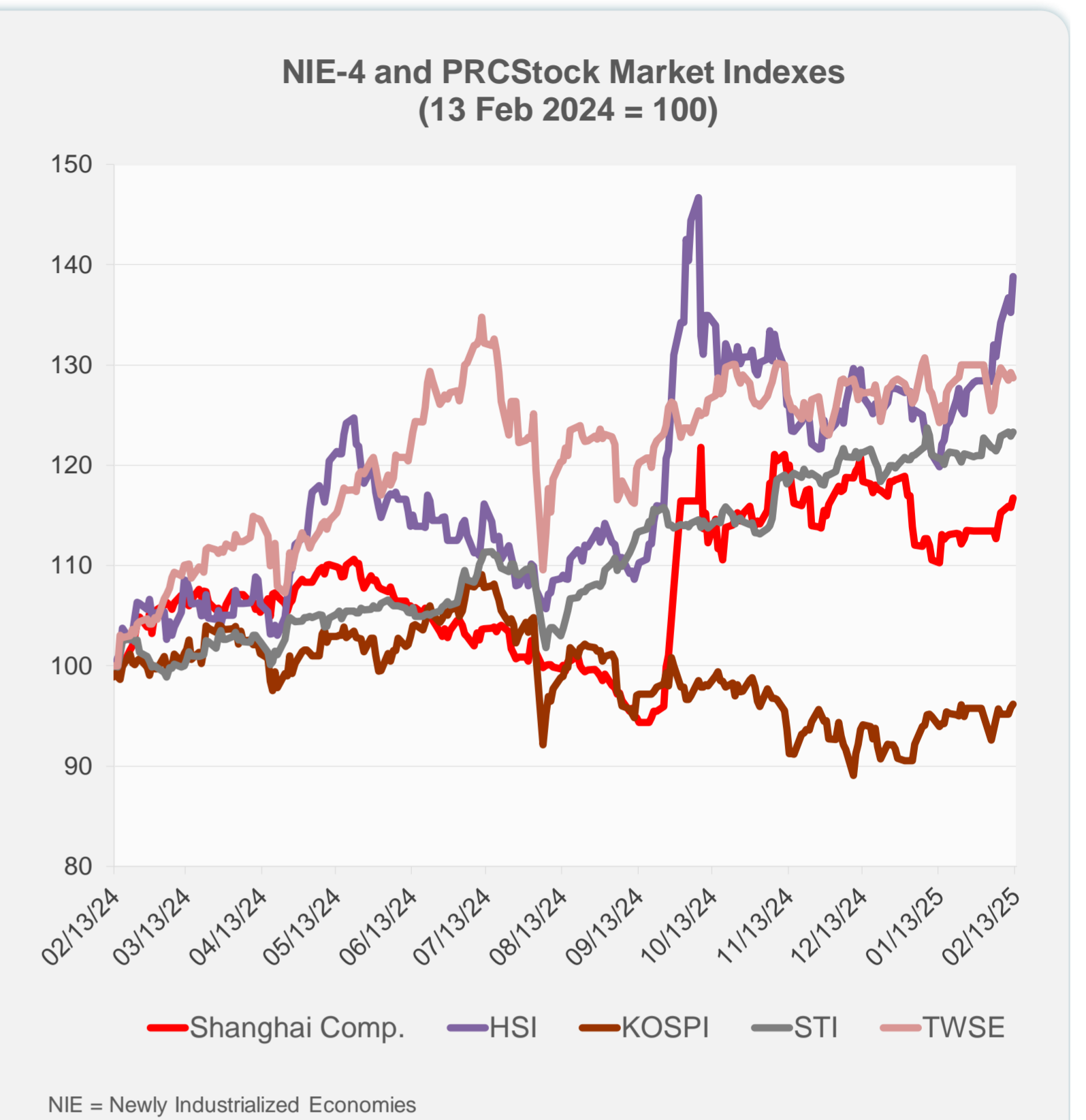
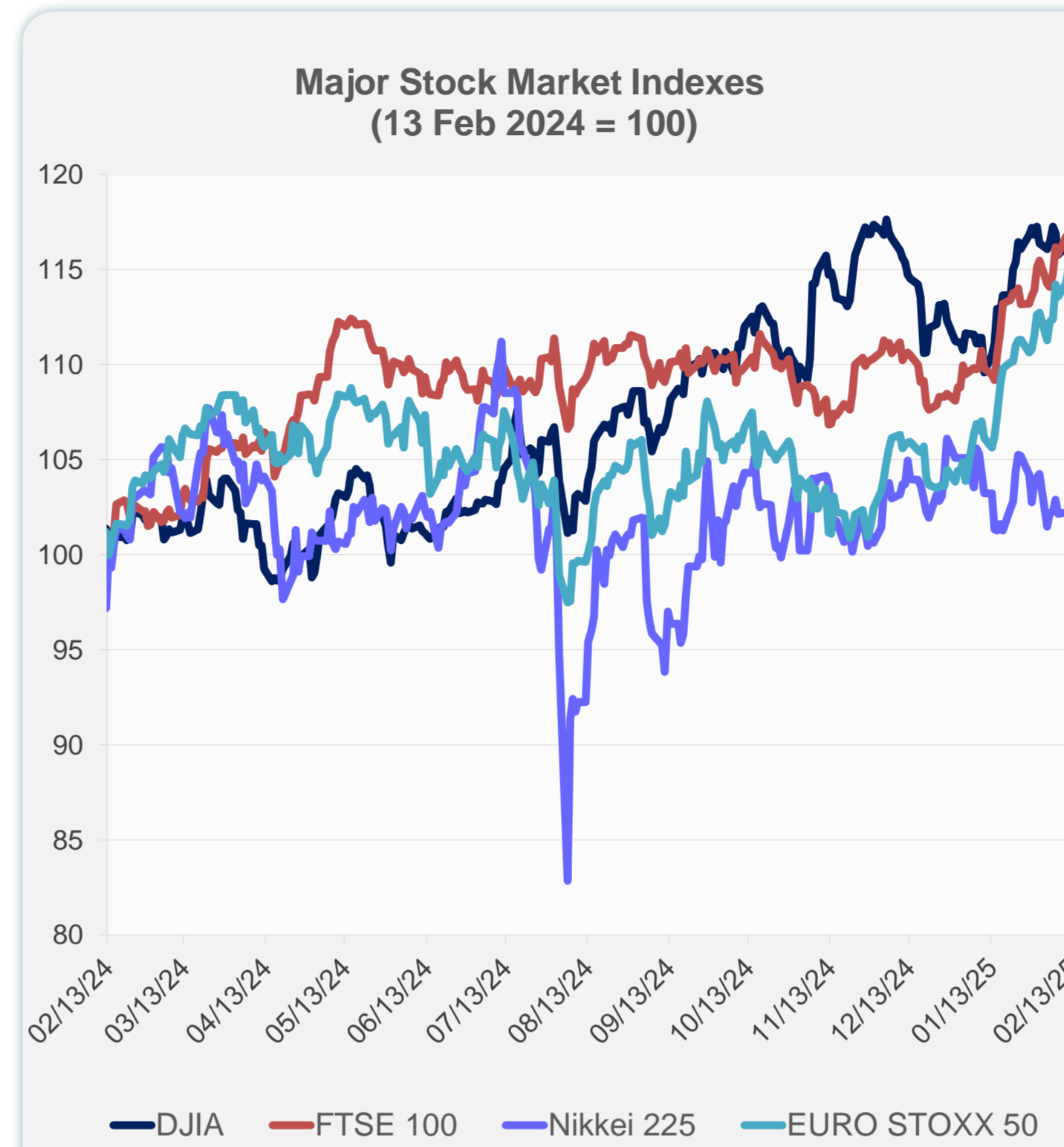
Note: Negative/Decreasing values indicate depreciation of local currency, and positive/increasing values indicate appreciation.
Source: ADB calculations using data from Haver Analytics.



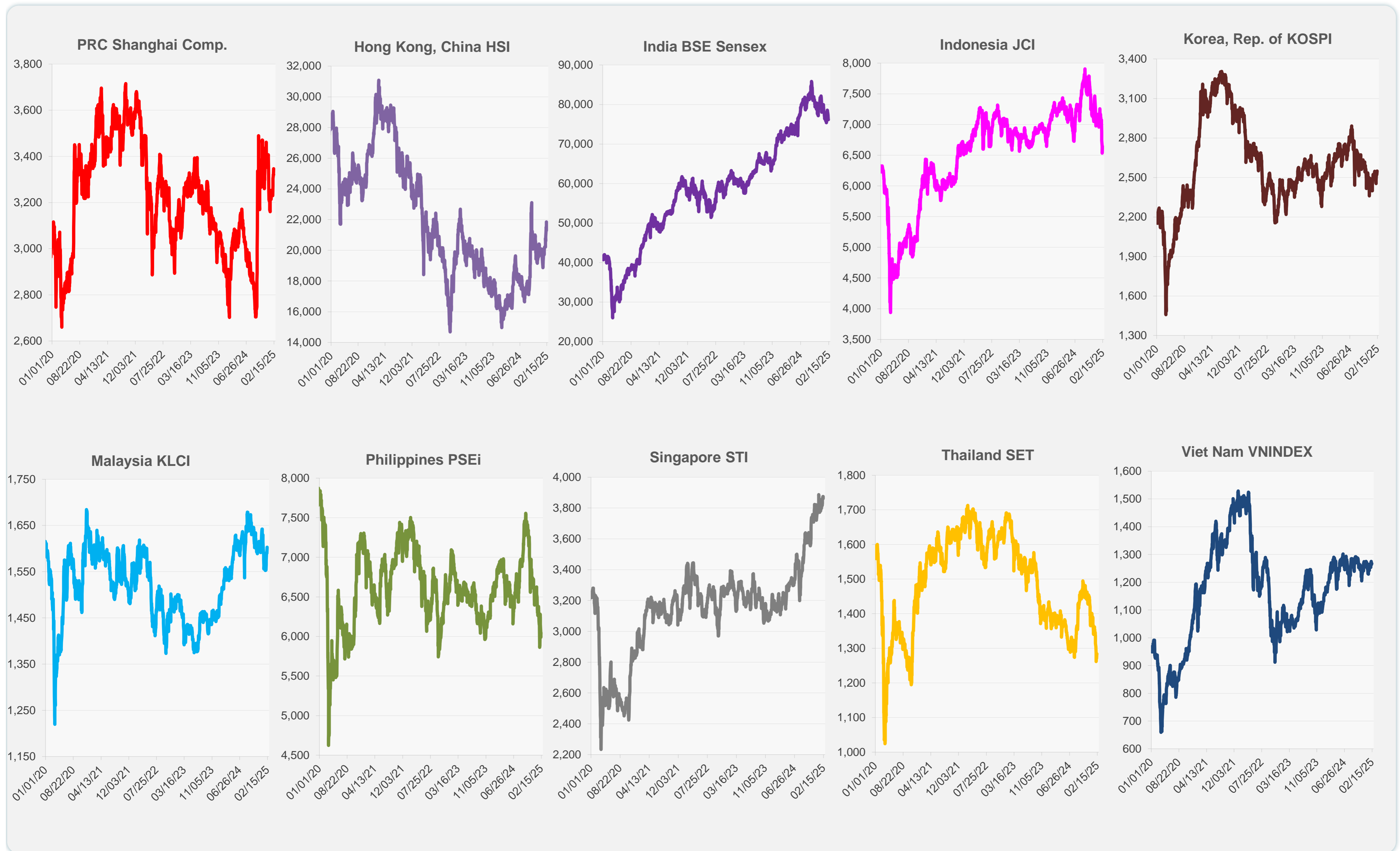
Source: Haver Analytics.

Daily Market Watch
STOCK INDEXES

	Latest Closing	% change from Previous Day	% change from 01-Jan-25
US Dow Jones Ind Avg	44,368.56	-0.50	4.29
US NASDAQ	19,649.95	0.03	1.76
US S&P 500	6,051.97	-0.27	2.90
UK FTSE 100	8,807.44	0.34	7.76
EURO STOXX 50	5,405.65	0.27	10.41
Japan NIKKEI 225	38,963.70	0.42	-2.33
Bangladesh DSEX	5,189.62	-0.05	-0.55
PRC Shanghai Comp.	3,346.39	0.85	-0.16
Hong Kong, China HSI	21,857.92	2.64	8.96
India BSE Sensex	76,171.08	-0.16	-2.98
Indonesia JCI	6,645.78	1.74	-6.13
Korea, Rep. of KOSPI	2,548.39	0.37	6.21
Malaysia KLCI	1,603.05	0.82	-2.39
Pakistan KSE 100	112,924.93	-0.08	-3.49
Philippines PSEi	6,044.13	0.94	-7.42
Singapore STI	3,874.62	0.36	2.30
Sri Lanka CSEALL	16,345.30	0.00	2.51
Taipei, China TWSE	23,289.75	-0.40	1.11
Thailand SET	1,283.97	0.00	-8.30
Viet Nam VNINDEX	1,266.91	-0.12	0.01



Sources: ADB calculations using data from CEIC Data Company and Haver Analytics.



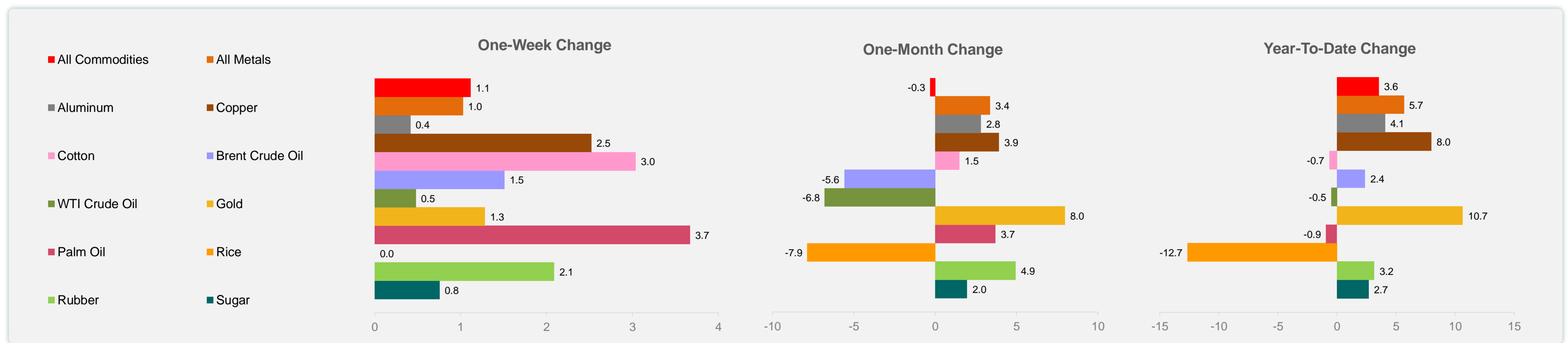
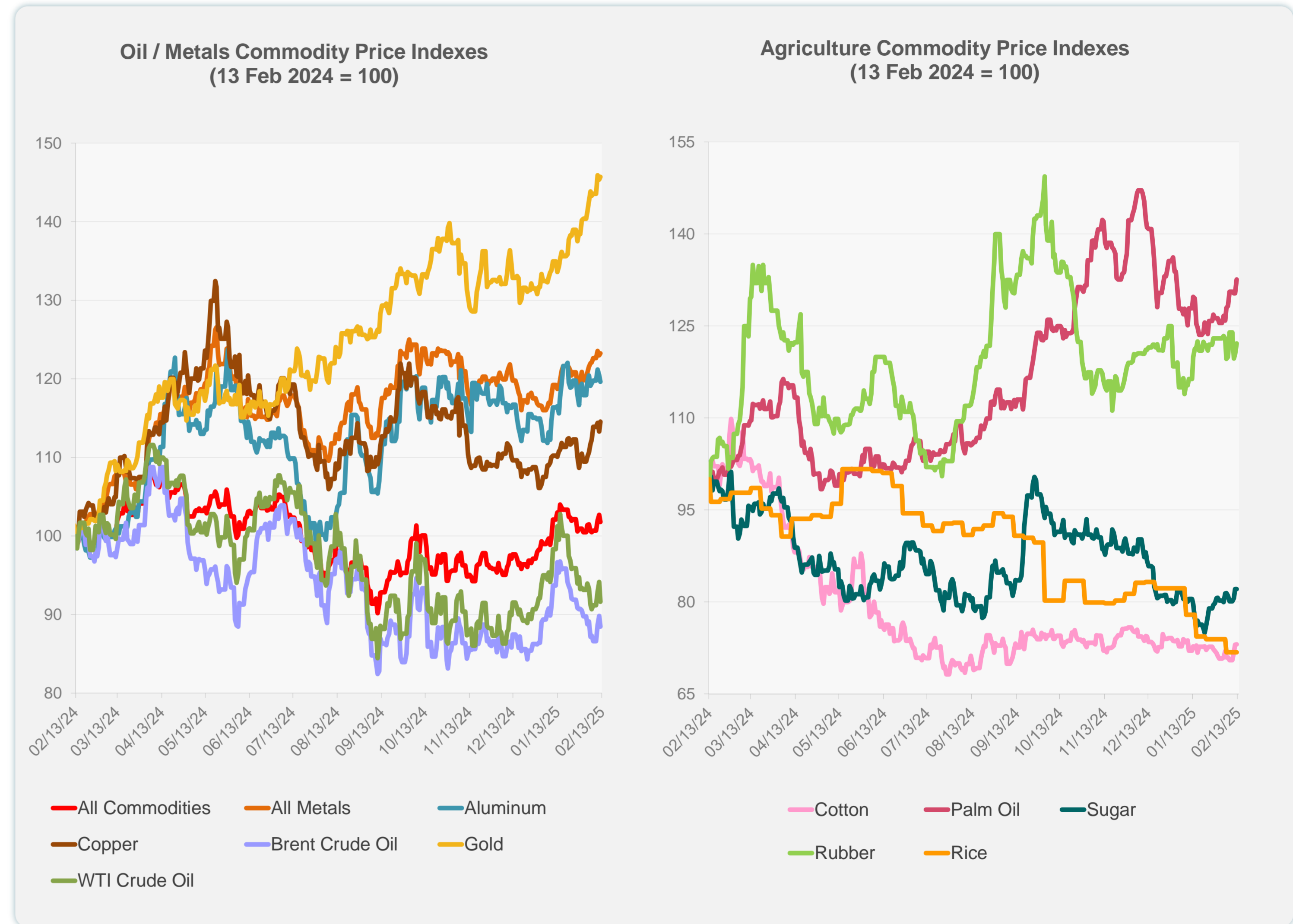
Sources: CEIC Data Company and Haver Analytics.

Daily Market Watch
COMMODITY PRICES

13 February 2025, 9:00 AM Manila

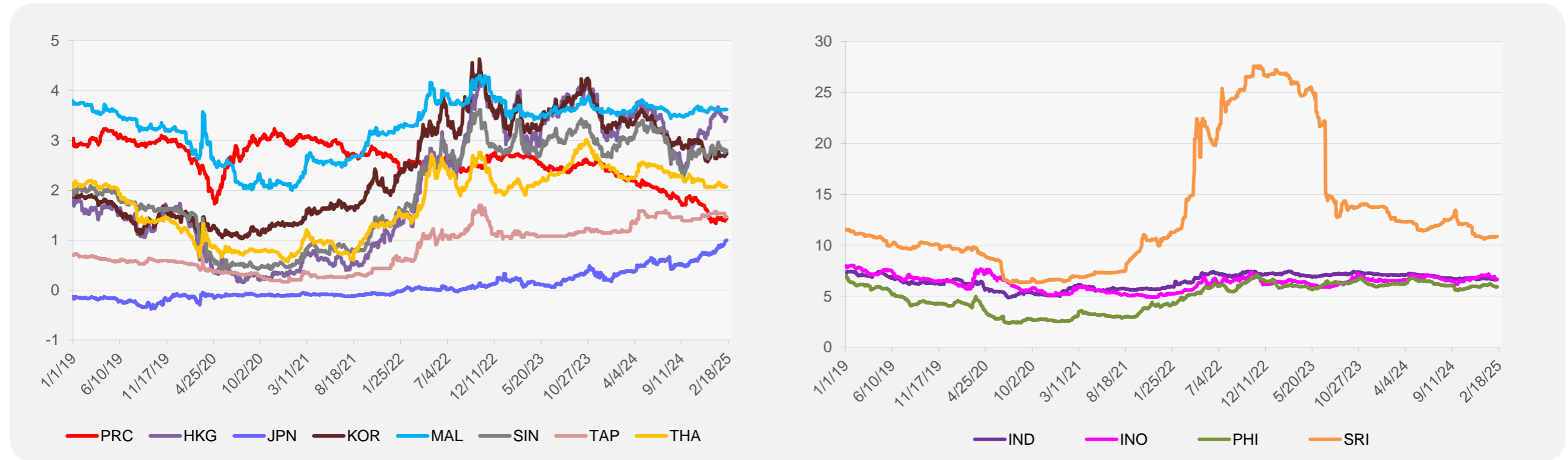
	Unit	Latest Closing	% change from Previous Day	% change from 01-Jan-25
S&P All Commodities	US\$	569.16	-0.91	3.55
S&P All Metals	US\$	324.82	0.19	5.67
Aluminum	US\$/metric ton	2,629.78	-0.68	4.08
Copper	US\$/metric ton	9,344.29	1.14	7.99
Cotton	US cents/lb	65.47	0.11	-0.65
Brent Crude Oil	US\$/barrel	75.88	-1.50	2.39
WTI Crude Oil	US\$/barrel	71.37	-2.66	-0.49
Gold	US\$/troy oz	2,904.04	0.21	10.65
Palm Oil	US\$/metric tonne	1,089.90	1.74	-0.93
Rice ¹	US\$/metric ton	469.00	0.00	-12.66
Rubber ²	US\$/kg	244.30	1.41	3.17
Sugar	US cents/lb	18.69	0.00	2.69

¹ Latest closing price from 22 January 2025.
² Singapore Exchange, Ribbed Smoked Sheet Rubber.

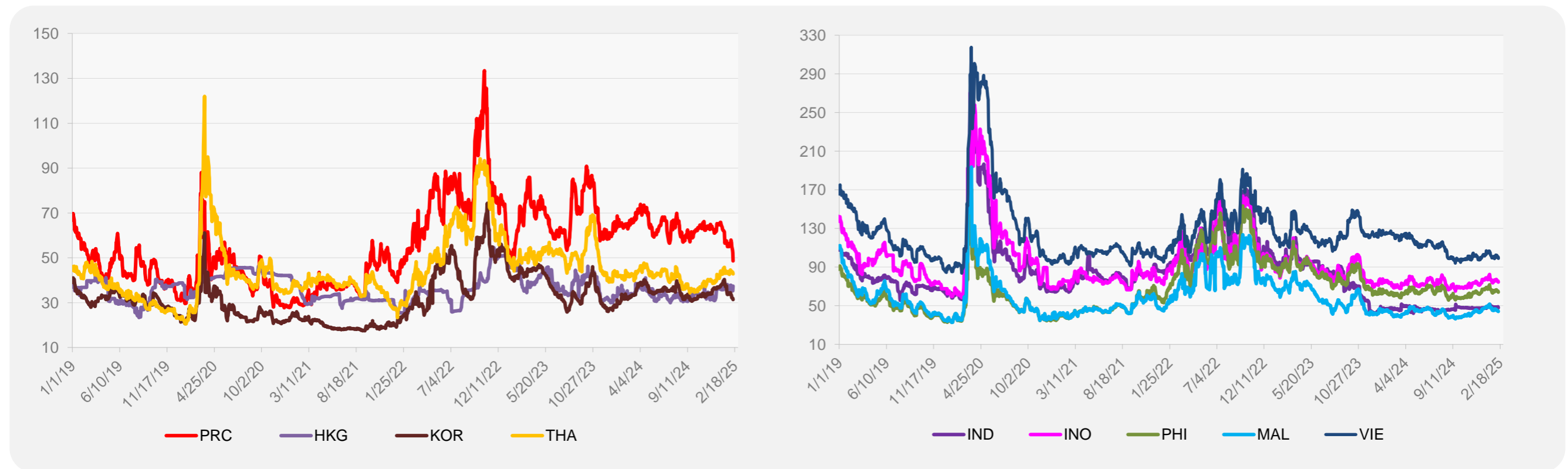


Source: ADB calculations using data from Bloomberg.

5-YEAR LOCAL CURRENCY GOVERNMENT BOND YIELDS (%)



5-YEAR CREDIT DEFAULT SWAP¹



¹ In USD and based on sovereign bonds.
Source: ADB calculations using data from Bloomberg.